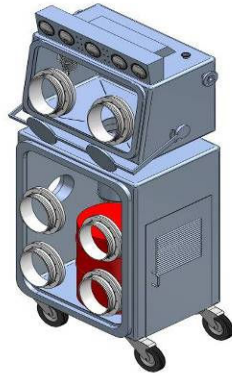






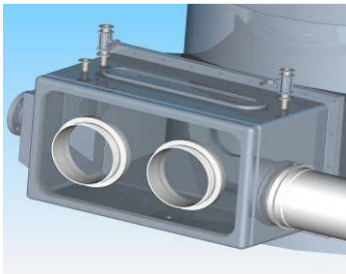




CONTAINMENT & SAMPLING TECHNOLOGY



-  Isolators for sampling, solids discharge and heel removal from Nutsche filters, dryers and filter dryers or a combination of all these functions into one system
-  Isolators are purpose built to suit existing and new filtration & drying equipment
-  Existing filter dryer discharge valves are replaced with integrated solids discharge doors to allow for contained access to the filter dryer interior via the glovebox system
-  Assessment of existing filtration & drying equipment for suitability for containment carried out by ProSys experts
-  Drum filling may be via continuous liner system, split butterfly valve, special bags or inflatable seal head interface
-  Integration of special atmospheres, solids metering, weighing, particle size reduction (screening, milling, etc.) and more into the containment system is possible



ProSys Filter Dryer Heel Removal & Discharge Gloveboxes
 • ✉ info@prosys.ie • 🌐 www.prosys.ie • 📞 +353 21 4613890



www.prosys.ie